

ZWD Wind Sensor

Z – automatic control, W – wind, D – detector,

TYPE: ZWD

1. DESCRIPTION

The ZWD wind sensor allows (when connected to the controller) automatic closing the windows in case of exceeding a pre-determined wind speed. The wind speed activating closing the window – for the ZTC3iw control unit can be set in the range of 10 to 40 km/h. The detector is designed to be mounted on the roof in unshielded places which are directly exposed to the elements.

2. ADVANTAGES

CONVENIENCE

The ZWD wind sensor makes it possible to:

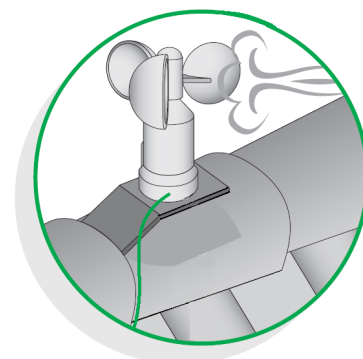
- automatically close the roof window,
 - automatically unroll the roller shutter,
 - automatically roll up the electric awning blind
- after the wind speed value set in the controller has been exceeded.

➤ Easy installation

The wind sensor is attached to a galvanized metal bar, which is included in the package with the sensor. The bar is attached at one end to the batten under roof covering and on the other it has an opening for fixing the sensor.



Figure 1: ZWD wind sensor



3. COMPATIBILITY WITH WINDOWS

The ZWD wind sensor is DIY installed. It can be used to control all types of opening FAKRO roof windows (wooden and aluminum clad-plastic).

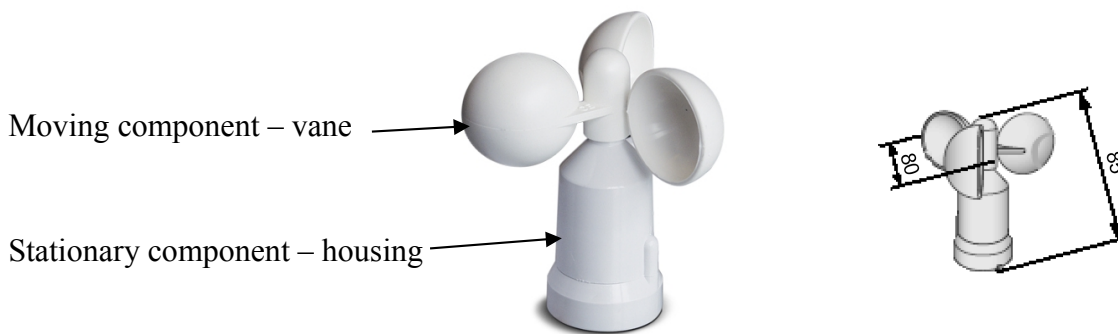
4. PRODUCT AVAILABILITY

The minimum stock level maintained for the ZWD wind sensor in Nowy Sacz is 5pcs.

- ZWD wind sensor – 55036

5. STRUCTURE

The ZWD wind sensor housing is made of plastic. Inside, there is a reed relay with a magnet which generates a frequency dependent on the rotational speed of the moving component of the sensor.



6. USING ZWD WINDOW SENSOR

In order to utilize the ZWD wind sensor, it is necessary to purchase the following devices:

- ZTC3iw control unit,



Figure 3: ZTC3iw control unit

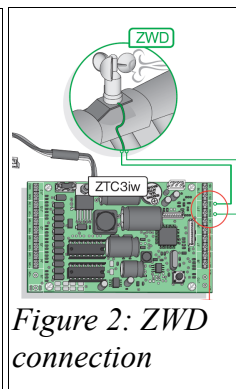


Figure 2: ZWD connection

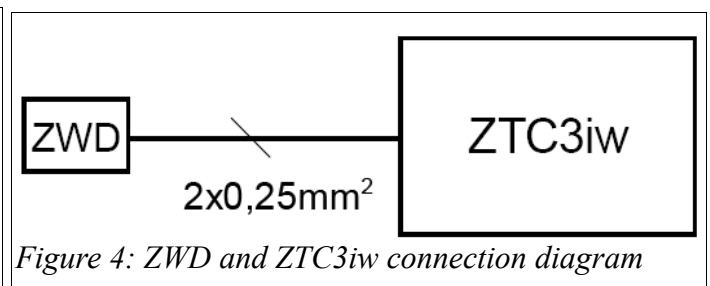


Figure 4: ZWD and ZTC3iw connection diagram

The ZWD wind sensor is connected to the controller of the ZTC3iw control unit with a 2-wire cable. The package includes a 5m cable.

One ZWD wind sensor can work with up to 9 ZTC3iw control units networked together, i.e. up to 27 windows can be connected to one wind sensor.

The wiring diagram of the ZWD wind sensor is included in the manual of the ZTC3iw control unit attached to every package.

Installation manual is available on the intranet at:
<http://intranet.fakro.pl/pl/products/automation/ventilation/detector/instructions/fitting-instructions/instrukcja-montazu-czujnika-wiatru-zwd>

7. SPECIFICATION

PARAMETER	ZWD
Working temperature	(+5°C) to (+40°C)
Power cable	2x0.25mm ² (5mb)
Wind Speed = number of impulses (revs) per second	10 km/h = 4 imp/s 16 km/h = 6 imp/s 22 km/h = 9 imp/s 28 km/h = 11 imp/s 34 km/h = 14 imp/s 40 km/h = 16 imp/s

8. LOGISTIC DETAILS

The production label (fig.6) of the ZWD wind sensor is placed on the top of the package (fig.5).

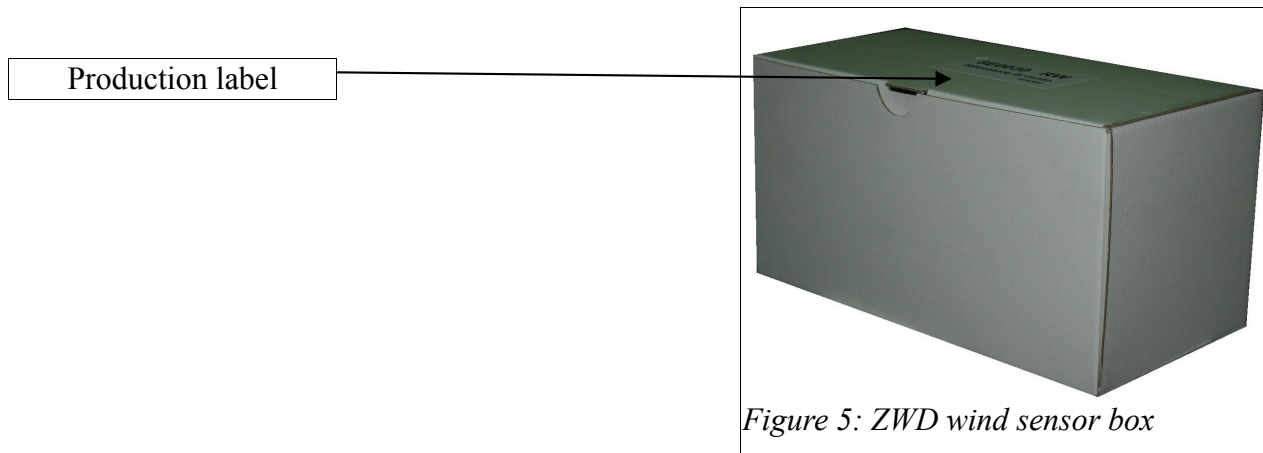


Figure 5: ZWD wind sensor box

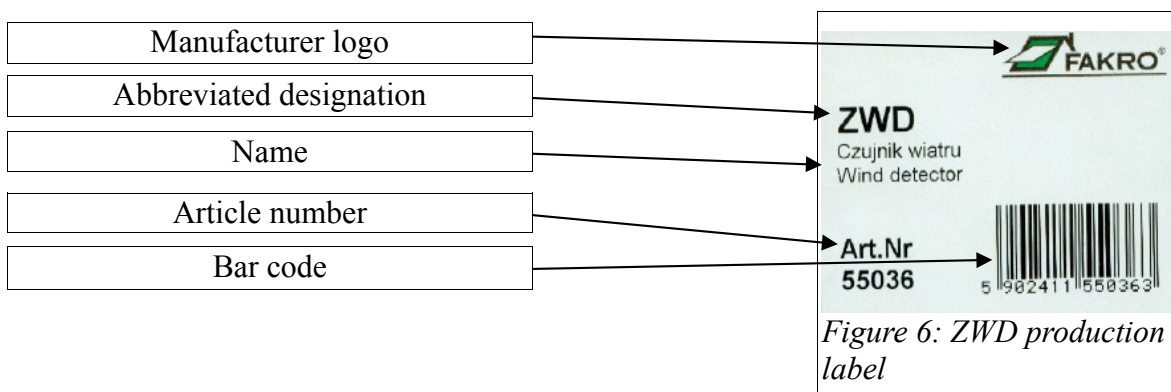


Figure 6: ZWD production label

Logistic details are to be found in the logistic card for the ZWD wind sensor available on the intranet at: <http://intranet.fakro.pl/pl/products/automation/ventilation/detector/logistics/logistics-cards/karta-logistyczna-czujnika-wiatru-zwd>

9. CERTIFICATION

The ZWD wind sensor is an electrical device certified in accordance with the provisions of the Electromagnetic Compatibility (EMC) Directive 89/336/EEC (2004/108/EC) and the Low Voltage Directive 73/23/EEC, as amended, in the following areas: safety, electromagnetic compatibility and effective use of the radio spectrum. The compliance with the above is confirmed by the CE marking on the product and the Declaration of Conformity. The Declaration of Conformity is found in every manual and will be also sent on request.

10. WARRANTY

The warranty is 24 months from the date of sale.

11. COMPETITION

The ZWD wind sensor competes with the following Velux products:

- no products.

12. FAQ

1. Does the ZWD wind sensor belong to the receivers?

No, the ZWD wind sensor is a detector.

2. Is it possible to connect one ZWD wind sensor to several ZTCi switches?

The ZWD window sensor is designed to be connected to the ZTC3iw control unit only.

3. Is it possible to connect one ZWD wind sensor to several ZTC3iw control units?

If you want to connect one ZWD wind sensor to several control units it is enough to connect the control units into one network (see ZTC3iw installation manual).

4. What should I do when the wind sensor signal causes, for example, opening windows instead of closing?

Please, swap the wiring connection polarity of the receiver.

Prepared by:
Michał Hajduga
Product Manager