



EFW

FLAT ROOF SYSTEM

APPLICATION

Flat Roof System makes it possible to install FAKRO roof window flat roof

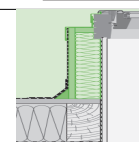
The system is intended for flat coverings:
Thermo-welded roofing felt, reinforced membranes



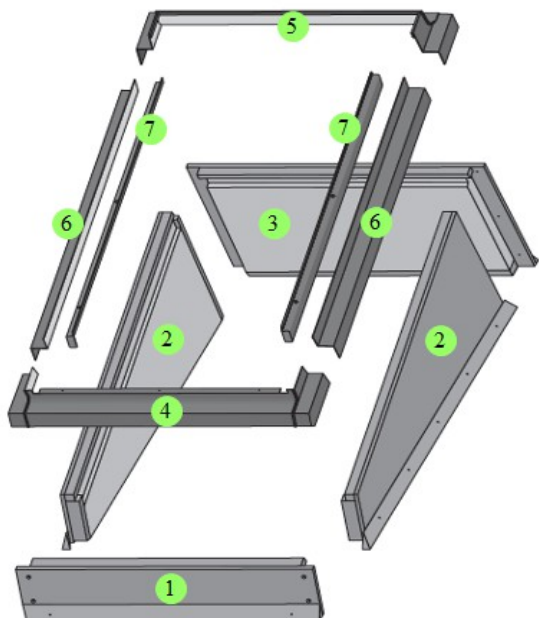
Installation in roof pitches: 0-15°



Window installation depth: V (0)



ELEMENTS OF FLASHING STRUCTURE



- 1 – Bottom element of the base
- 2 – Right/left element of the base
- 3 – Top element of the base
- 4 – Bottom element of the aluminium flashing
- 5 – Top element of the aluminium flashing
- 6 – Right/left element of the aluminium flashing
- 7 – Profile covering side of frame, right-left

MATERIAL

The base of the EFW system made of plywood with a thickness of 1.2 reinforced on the perimeter with strips made of vacuum-impregnated. The base elements are insulated with polystyrene EPS 70 - 040 with a

EFW system flashing

Aluminium sheet: AW-1050A
Lacquer: modified polyester in RAL 7022
Sheet thickness: 0,5 – 0,6mm

COMPATIBILITY WITH WINDOWS

Flashing type	Window type											
	FT	FP	PT	PP	FD	FY	FE	FG	FSR	FS	FW	FWP
EFW												

SIZE LIMITS

60	*	*	31	32	33	34	35	36
70	*	*	*	*	*	*	*	*
78	46	47	01	22	23	24	25	26
98	48	49	02	03	05	15	*	12
118	*	*	16	04	06	08	10	18
140	*	*	*	14	07	09	11	17
160	*	*	*	*	13	80	*	*
180								
186								

hheight

Available sizes

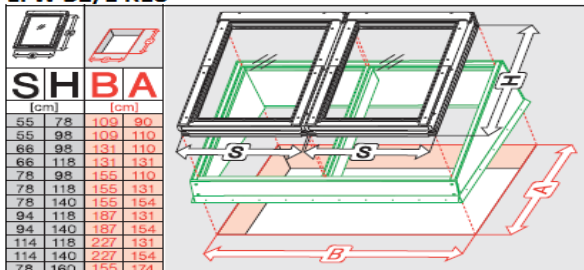
* Possible in non-standard version

Size not available

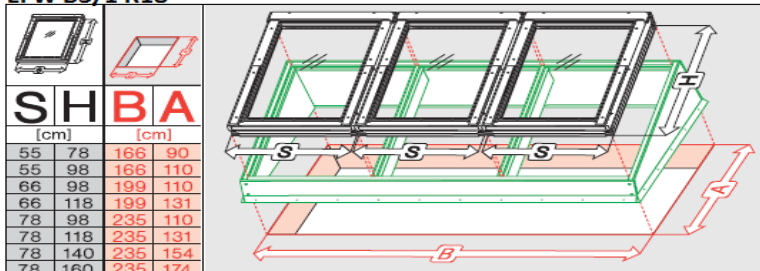
COMBINATIONS

On special order, it is possible to make a horizontal, integrated EFW system for several windows at distances of 18, 40 and 100 mm. Then the casing constitutes one common element, and the window frames are connected with each other by an auxiliary rafter. The maximum length of such an assembly is 2.5 m.

EFW B2/1 R18



EFW B3/1 R18



OPCJE



Flashing in RAL colours



Flashing in copper