



Installation Guide

shingle

BRITMET
LIGHTWEIGHT ROOFING

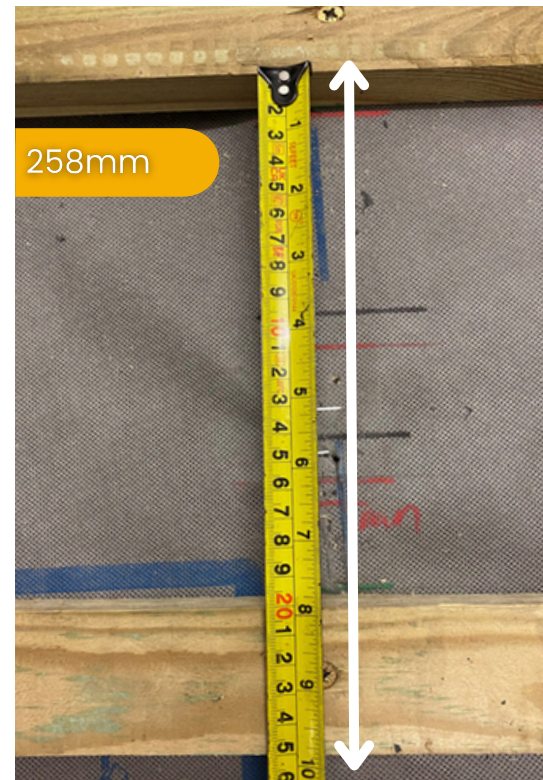
sales@britmet.co.uk | 01295 250998 | www.britmet.co.uk
lightweight composite slate | lightweight granulated tile panels | lightweight tile effect sheets | flat-to-pitch roof conversions | structural liner trays | door canopies | decorative exterior paint

Table Of Contents

<u>Installing the Battens for Shingle Panels</u>	3
<u>Installing Ventilation and Eave Course</u>	4
<u>Securing Shingle Panels and Flashings</u>	5
<u>Laying Shingle Panels</u>	6
<u>Installing the Soaker and Barge Sections</u>	7
<u>Installing the Valley Flashing</u>	8
<u>Installing the Ridge</u>	9
<u>Installing Hip Shingles and Battens</u>	10
<u>Installing the Wall Soaker and Shingles</u>	11
<u>Rooflight Installation</u>	12 - 15
<u>Installing Shingles & Rooflights</u>	16

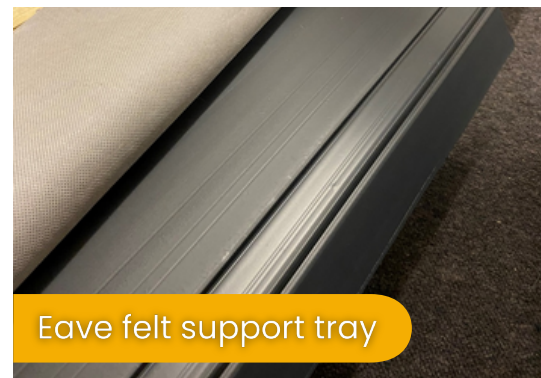
Installing the Battens for Shingle Panels

- 1** Ensure Precision: Since the Shingle panels have a fixed gauge, all battens must be accurately measured and perfectly straight. Measure from the lower face of one batten to the lower face of the next
- 2** First Batten Placement:
 - Measure from the front of the fascia, subtracting 40mm from the 258mm gauge to allow for gutter overhang.
 - Fix the following battens 258mm apart up the rafter, typically leaving a shorter course at the ridgeline.
- 3** Eave Batten Installation: Secure the eave batten 20-25mm above the over-fascia vent, fastening it into the rafter.
- 4** Ridge Batten Installation: At the ridge, install two battens side by side, 10-25mm away from the ridgeline.



Installing Ventilation and Eave Course

- 1** Install Over Fascia Vent Strip: If ventilation is required, install an over fascia vent strip, ensuring it matches the roof pitch. Secure it onto the fascia. Install the eave batten 20-25mm above the fascia vent strip.
- 2** Install Felt Support Tray: Place a felt support tray above the fascia vent strip and secure it into the rafters.
- 3** Trim the Membrane: Trim the membrane at the edge of the downturn of the eave felt support tray.
- 4** Install Shingle Eave Course: When installing the shingle eave course, ensure the front edge of the panel extends 40mm beyond the fascia to allow rainwater to flow directly into the gutter.



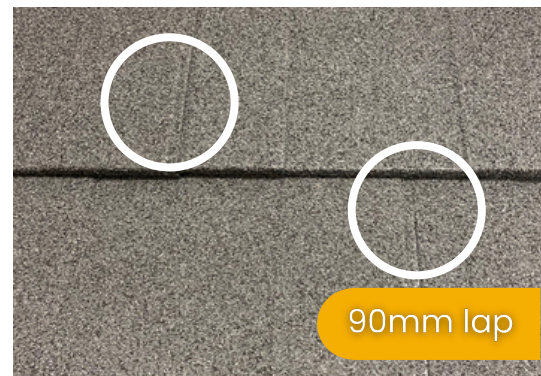
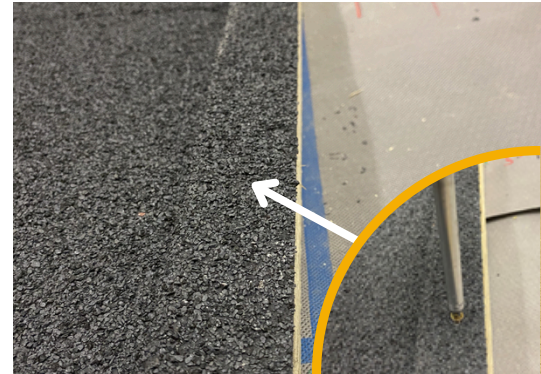
Securing Shingle Panels and Flashings

- 1** Use the Correct Fasteners: Use Britmet Shingle 30mm nails or 30mm countersunk screws to install Shingle panels and accessories.
- 2** Ridge & Hip Flashing: Secure ridge and hip flashings by fastening through the downturn with 3 fixings on each side.
- 3** Barge Flashing: Secure the barge flashing with 3 fixings along the side.
- 4** Eave Course Fixings:
 - Vertically fasten the eave course into the eave batten using 4 fixings per panel.
 - After securing, use the touch-up kit to seal and make these vertical fixings weather tight.



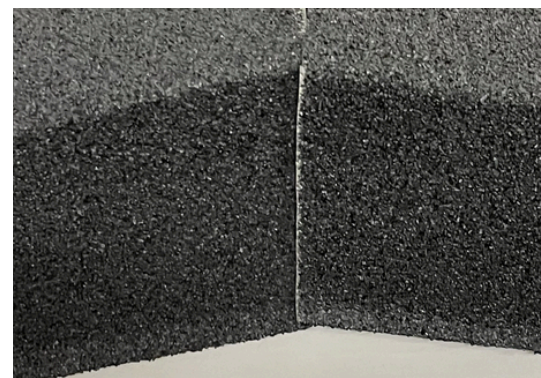
Laying Shingle Panels

- 1 Start at the Eave:**
 - Begin laying the shingle panels from the right side, starting at the verge, hip, or valley as needed. Ensure the top edge of each panel aligns with the top of the first batten.
 - Secure the panel by nailing or screwing through the top into the batten.
- 2 Lap the Panels:** Overlap the next shingle by 90mm to ensure proper coverage over the drainage channels.
- 3 Lay the Next Course:** Install the next course in a broken bond pattern. Use off-cuts from the previous course to start the next, minimizing wastage.
- 4 Tighten the Lap:** When lapping each shingle, use a wooden block and hammer to ensure a tight, secure fit.



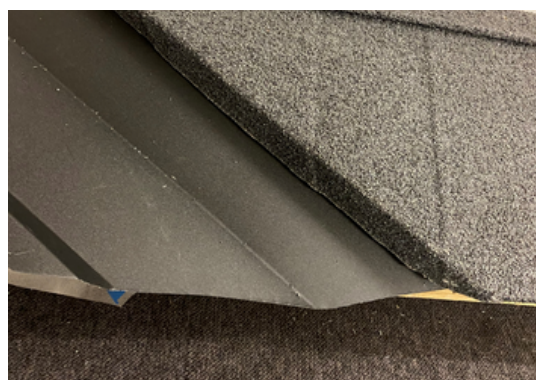
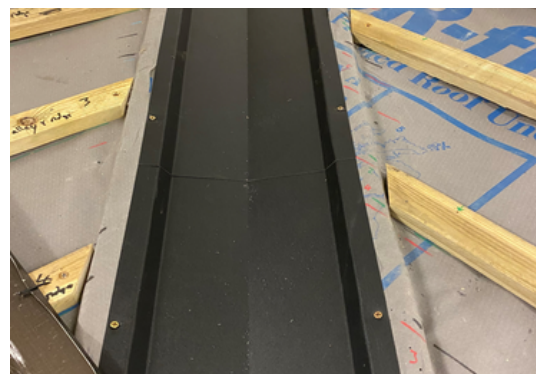
Installing the Soaker and Barge Sections

- 1 Install the Soaker Section:**
 - Position the soaker section on top of the shingle battens. Secure it by nailing into the tile battens.
 - If using a timber or uPVC barge fascia, install it approximately 25mm above the tile battens. Nail or screw the upstand of the soaker into the barge board.
- 2 Place Shingle Panels:** Ensure the shingle panels are positioned 10–25mm from the outer edge of the soaker.
- 3 Install the Barge Section:**
 - Place the barge section against the barge fascia, ensuring it laps over the soaker section. Fix through the top side of the barge section into the barge fascia at regular intervals.
 - For the next barge section, ensure a minimum 25mm lap over the previous section.
- 4 Finish at the Ridgeline:** At the ridge, mark and cut the barge section, then pivot it to cover the adjoining barge. Fix in place and touch up any cuts for a clean finish.



Installing the Valley Flashing

- 1 Choose and Prepare the Valley Flashing:** Use any suitable open valley type, such as GRP, lead, or Britmet Valley flashings. Valley boards are recommended and should be lined with membrane and valley battens.
- 2 Install the Valley Flashing:** Position the valley flashing with a lap appropriate for the product and roof pitch. Secure it into the top of the valley battens.
- 3 Measure and Cut:**
 - Measure from the battens' bottom to the valley, then add 25mm for the bend line and at least 25mm for the downturn, based on valley depth.
 - Use a bender or wide-nose pliers to cut and fold the flashing. Repeat for all courses.
- 4 Trim the Fold:** Trim the fold to ensure that the downturn of the shingle overlaps the next course properly.



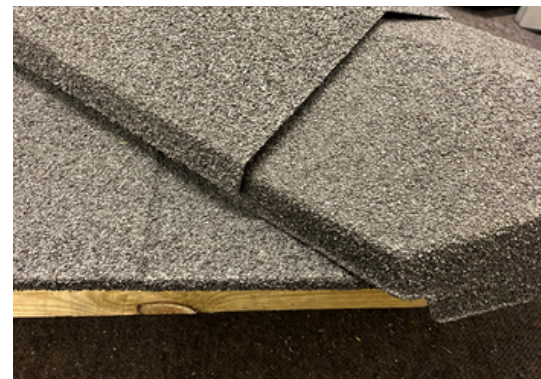
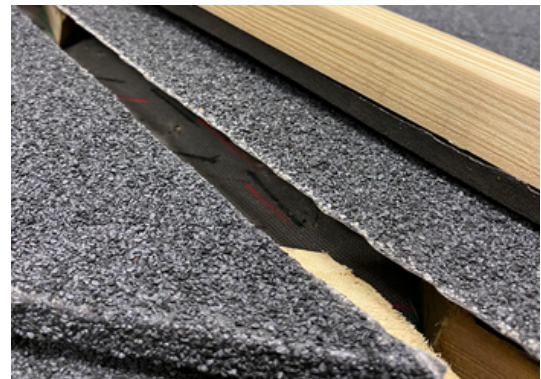
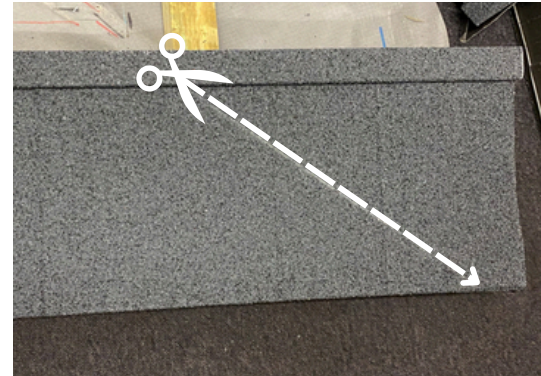
Installing the Ridge

- 1** Prepare the Top Course: Ensure the top course is positioned 10mm below the ridge line. Cut the panels as needed to achieve this.
- 2** Check Air Gap: For both ridge and mono-ridge installations, maintain a 10mm air gap between the membrane and the top course.
- 3** Install the Ridge Vent Strip: Place the ridge vent strip under the ridge batten and adjust it to align with the ridge flashing. Secure the batten through the panel and into the substrate.
- 4** Position and Secure the Ridge Flashing:
 - Position the ridge flashing over the ridge vent strip. Secure it with 3 fixings on each side, fastening through the downturn of the flashing.
 - Where the ridge flashing meets the barge or hip, snip the downturns to ensure the flashing sits flush.



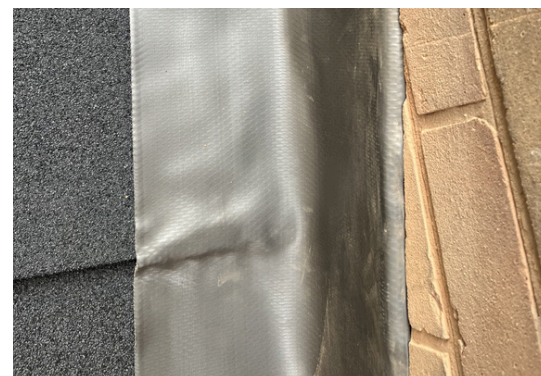
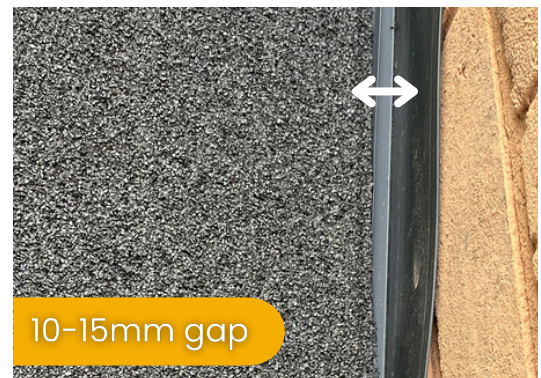
Installing Hip Shingles and Battens

- 1 Prepare Shingles for the Hip Line:**
 - Position the shingle along the hip line and mark it 10-25mm short of the hip line.
 - Cut the shingle using the appropriate tools.
 - Repeat this process for each course on both sides of the hip, ensuring a 10-25mm air gap.
- 2 Apply Expanding Foam Tape:** Add expanding foam tape to the underside of the hip batten.
- 3 Install Hip Battens:**
 - Position the hip battens on either side to match the angle of the ridge, ensuring the foam tape is on the underside.
 - Secure the battens from the top, fastening through the panel into the substrate.
- 4 Position and Secure the End Cap and Angle Ridge:**
 - Place the end cap and position the angle ridge over the top.
 - Secure the angle ridge with 3 fixings on each side into the hip battens. Repeat this process up the rafter as needed.



Installing the Wall Soaker and Shingles

- 1 Set Back the Battens:** For wall soaker installation, position the battens 55mm back from the wall so that the trough of the soaker sits below the batten level.
- 2 Secure the Wall Soaker:** Fix the wall soaker in place by attaching it to the side wall. There is no need to secure the soaker to the battens, as the shingles, when installed, will hold it in place.
- 3 Install Shingle Panels:** Fit the shingle panels so they are within 10-25mm of the wall soaker, ensuring consistency. Touch up any cut edges for a neat appearance.
- 4 Finish Top Abutments:** Install top abutments similar to ridge details, including ventilation if required. Flash the back of a chimney using traditional methods.



Rooflight Installation

- 1** Prepare the Rooflight Frame: Attach the rooflight brackets as per the manufacturer's instructions.
- 2** Frame the Rooflight Area: Create a timber frame for the rooflight's position.
- 3** Add the membrane: Lay down the appropriate membrane, leaving a slight excess to ensure it overlaps the rooflight frame.
- 4** Position Battens: Remove the rooflight frame and install battens so that the rooflight brackets rest on top. Use the provided fixings. The supporting battens should be the same size as the tile battens.
- 5** Install tile battens: Fit the tile battens according to the roof's size, layout, gauge of 258mm. Make sure the battens are secured all the way up to the rooflight frame to support the rooflight flashing kit.



Rooflight Installation

- 7 Install the Under Cloak: Place the under cloak (provided by the rooflight manufacturer) over the tile battens.

- 8 Install Shingle up to the Rooflight: Complete installing shingle up to the underside of the rooflight.

- 9 Install Flashing Kit:
 - Start from the bottom of the rooflight, position the flashing Skirt over the shingle panels and secure as per manufacturers guidelines.
 - Complete the flashing kit over the under cloak and secure.

- 10 Install Flashing Kit:
 - Start from the bottom of the rooflight, position the flashing Skirt over the shingle panels and secure as per manufacturers guidelines.
 - Complete the flashing kit over the under cloak and secure.

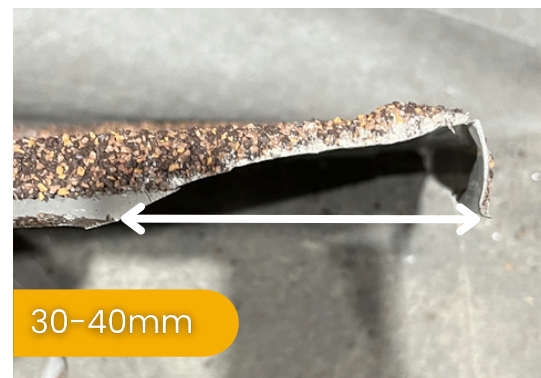
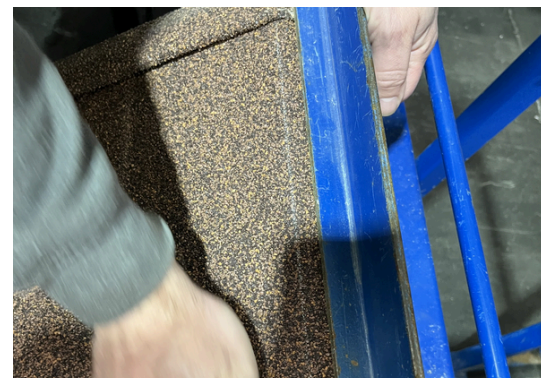
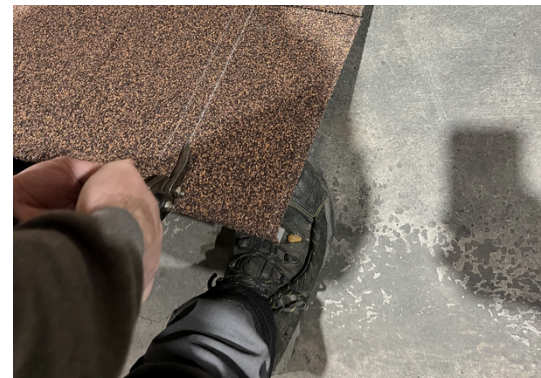


Note: Ensure the correct profile flashing kit is used.

Rooflight Installation

- 13** Measure and Mark: Measure the distance from the shingle panel to the inside water check of the flashing kit and add 10mm. Mark on the panel for the bend line then mark 20mm extra for the cut line.
- 14** Cutting Shingle Panels: Guillotine can be used for cutting but the easiest way is using tin snips (offset). Cut along the line.
- 15** Create the Downturn: Place the panel in the bender, fold the panel down to create the bend.
- 16** Final Preparation: Due to the profile of the shingle, the folded panels need to have a angled cut towards the downturn. Approx. 30-40mm diagonal cut.

Note: If necessary, cut and fold the top tile shingle like the side panels based on how the courses align.



Rooflight Installation

17 Mitring the Panels:

- Place the panel so that the cut front edge sits over the rooflight skirting
- Mark the panel with a diagonal line from the top edge of the skirting
- Using tin snips cut away the corner piece
- Reposition the panel so that the downturn covers over the water checks. Fix the panel as per normal



18 Tiling Around the Rooflight:

- Complete the course on both sides of the roof light up to the top flashing
- Place the next course over the top flashing and mark where the course below laps in to the flashing
- Cut away the folded front edge to allow a flush fit over the previous course
- Reposition the panels so the the cut area sits flush over the course below. Secure the panel as per normal and complete the course



Note: Ensure you adhere to the rooflight manufacturer's instructions for brackets and flashing kits, as they may vary.

Installing Shingles & Rooflights

- 1** Check Compatibility: Britmet shingles are compatible with most rooflights. Verify with the manufacturer which flashing kit is suitable for the rooflight profiles.
- 2** Prepare the Battens: Notch out the battens where the rooflight will be installed to accommodate the flashing kit, if possible.
- 3** Install the Rooflight Flashing Kit: Begin by installing the panel below the rooflight. Then, fit the flashing kit according to the manufacturer's guidelines.
- 4** Position Panels: Install the panels around the rooflight as you would for valleys, ensuring a downturn into the flashing.
- 5** Avoid Penetrating the Flashing Kit: Ensure that no fixings penetrate the flashing kit to maintain a proper seal.

