



**Composite Prime®**

Natural Evolution

Products:

p8

p12

p16

p18





## Meeting of minds

Established in 2014 by **Domenic Harrison** and **Charles Taylor**, composites came quite naturally to the two entrepreneurs due to their families' great history in both the plastics and timber industries.

The Harrison family has a history in the plastics sector, with Geoff Harrison, a stalwart of the field who, along with Kevin McDonald, was a founding member of Polypipe Plc in 1980.

The Taylor family has been established in the timber industry for more than 60 years, with Charles being its third generation timber merchant.

Both experienced in their respective fields, they have created the perfect partnership with Composite Prime's unique formula of wood plastic decking and cladding, as well as innovative flooring, cleaning products and accessories.



p22

## What's in a name?

### **composite**

*adjective*

1. Made up of several parts or elements.

### **prime**

*adjective*

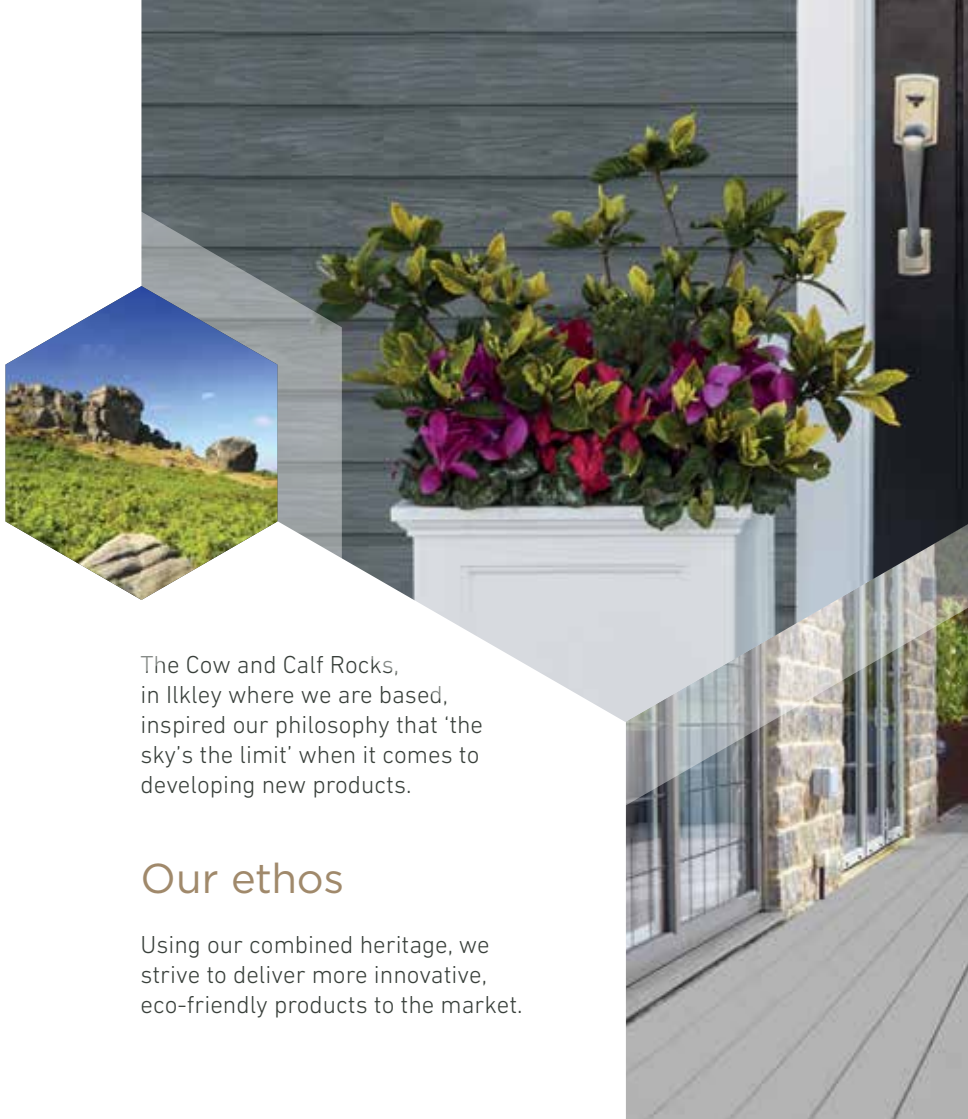
1. Of the best possible quality; excellent.



The Cow and Calf Rocks, in Ilkley where we are based, inspired our philosophy that 'the sky's the limit' when it comes to developing new products.

## Our ethos

Using our combined heritage, we strive to deliver more innovative, eco-friendly products to the market.



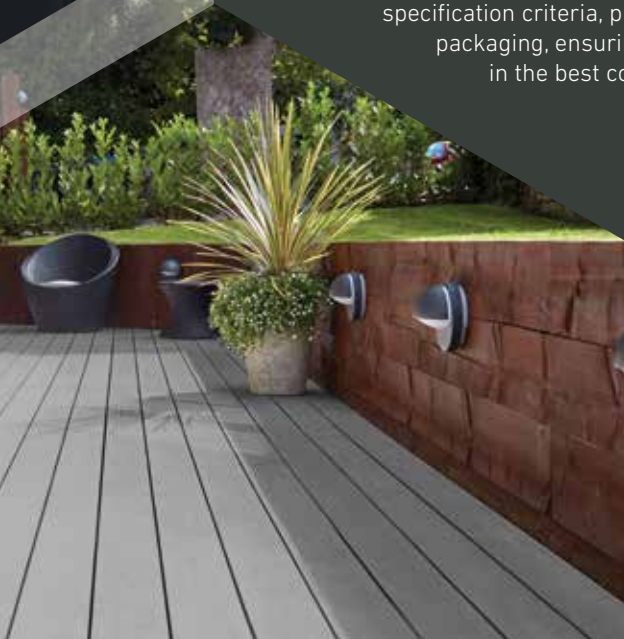
## Manufacturing process

We start the process by testing the batch of raw materials to ensure they meet our stringent, quality control parameters. Using the **latest technology** in our state of the art factory, we blend the components together and extrude a finished product that is **engineered to perform**. Every production batch is tested and inspected to ensure that it meets our specification criteria, prior to cleaning and packaging, ensuring it reaches you in the best condition.

## Why choose Composite Prime®?

Our range of *Touchstone Flooring™*, *HD Deck®* and *HD Clad™* composite products, feature an array of benefits that will keep your home and garden looking fantastic for years to come. We are proud to announce that our products are truly **eco-friendly** and **socially responsible**.

*HD Deck®* and *HD Clad™* are low maintenance, **durable alternatives to traditional timber** as the boards are extra hard wearing and need no life extending treatments, such as oiling and painting. Due to the unique formula, the boards do not rot or splinter, making any decking extra safe for children and animals.







We can be confident in the quality of *HD Deck®* and *HD Clad* composite products, as we know the origin and species of the tree used in our wood flour.

## Eco-Friendly

Our wood flour is

**FSC® 100%  
CERTIFIED TIMBER**

from responsible  
sources

## Strong and Durable

Composite Prime® uses

**QUALITY OAK  
WOOD FLOUR**

a hardwood perfect for  
wood composites

**Socially  
Responsible**

# Environmentally Friendly

We saved  
the equivalent of

**50,000,000**

plastic milk bottles  
from landfill

We recycled  
the equivalent of

**600,000,000**

plastic milk  
bottle caps

We recycle  
the equivalent of

**280**

plastic bottles  
per square metre  
of decking





# HD DECK® DUAL

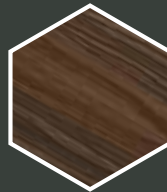
**HD Deck Dual® decking boards have an unrivaled likeness to timber, which really sets it apart from other composites available.**

The natural wood grain not only looks and feels great, it also offers **maximum performance against stains.**

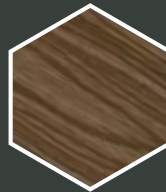
The dual-sided composite board offers a **reversible two-colour option**, providing the opportunity to lay a deck with contrasting colours to create a bespoke finish.

HD Deck Dual® takes composite decking boards to the next level, with its 'capped' design, creating a **coated layer** that offers increased protection against fading and the elements, for an extra long life.

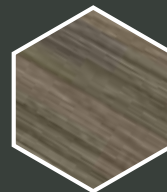
- **Low maintenance**
- **Slip resistant**
- **Durable**
- **Sustainable**
- **Barefoot safe**
- **Reversible**



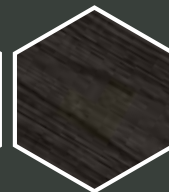
**Walnut**  
Side 1



**Oak**  
Side 2



**Antique**  
Side 1



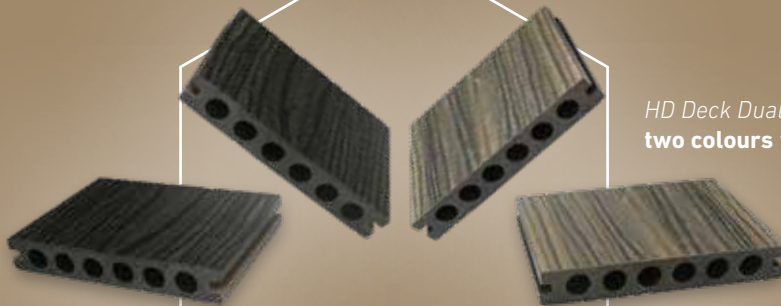
**Carbon**  
Side 2





# Natural Wood Grain Composite Decking

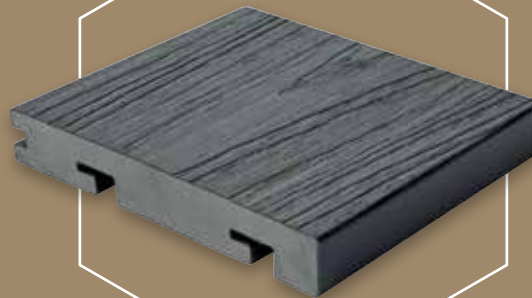
Image: *HD Deck Dual®* Antique



*HD Deck Dual®* is **double-sided**, offering you **two colours** to use on your deck!



The **secret clip system** allows your installation to be free from blemishes and obstructions. Create a stiletto friendly deck by reducing the spacing between adjacent boards from 5mm to 1mm, with the new slim clip system.



Exclusive to *HD Deck Dual®*, the **bullnose board** offers next level finishing for your complete decking project. Perfect for steps and borders and available in complementary colours to match or contrast with the decking boards.

**Daily Mail**

“Composite Prime... durable  
low-maintenance decking which  
looks just like the real thing”

“Go green... create a beautiful  
garden without damaging  
the environment”

  
**THE SUNDAY TIMES**

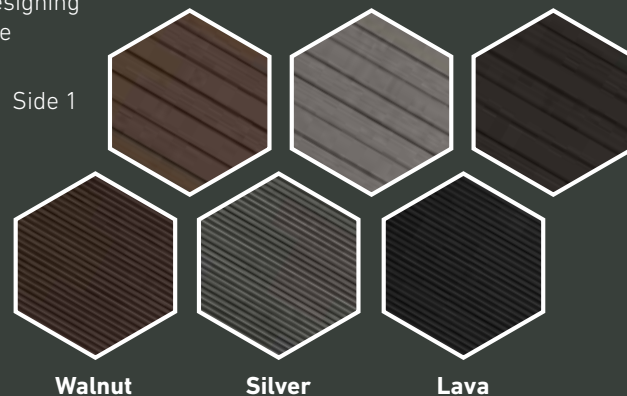


# HD DECK<sup>®</sup> XS

**Whether you're planning to host a party, barbecue or entertainment on your decking, it's good to know that Composite Prime's decking won't splinter or become slippery because of its superior composite ingredients.**

*HD Deck XS<sup>®</sup>* comes in three different colourways, so you'll have plenty of variety to choose from when designing your decking to complement the surrounding areas.

- Low maintenance
- Slip resistant
- Durable
- Sustainable
- Barefoot safe
- Attractive







# HD DECK®

*HD Deck XS® Fire* offers the same benefits of *HD Deck XS®* but is **class B fire rated**. The higher rating provides customers with balconies, verandahs and roof terraces the peace of mind they desire.

Slate

## Extra Strong Fire Rated Composite Decking

# Decking Accessories

The **secret clip system** ensures a clean, elegant finish on your deck – without unsightly screws!

**DUAL**  
DRIVE



HD Deck Dual®  
End Cap



HD Deck Dual® Fascia  
11 mm x 72 mm x 3.6 m\*



HD Deck Dual®  
Starter Clip



HD Deck Dual®  
Bullnose



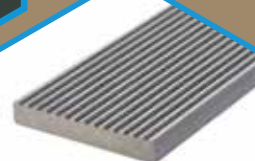
Slim Clip  
and Screw



Universal Clip  
and Screw



HD Deck XS®  
End Cap



HD Deck XS® Fascia  
11 mm x 74 mm x 3.6 m



HD Deck XS®  
Starter Clip



Slim Clip  
and Screw

**XS**

A Composite Prime Product

# ***abzorb<sup>it</sup>***

## **Grease & Oil Stain Remover**

***Abzorb<sup>it</sup>***<sup>™</sup> is a revolutionary new aerosol spray that treats and removes grease and oil stains, with a simple spray on and brush off process.

*Abzorb<sup>it</sup>*<sup>™</sup> can be used to treat stains on any timber or uncapped composite decking product. Ideal for use on *HD Deck XS<sup>®</sup>* and *HD Deck XS<sup>®</sup> Fire*.

***SPRAY ON, BRUSH OFF!***

STAIN • ***abzorb<sup>it</sup>*** • GONE







# EDGE™ Balustrade System

**EDGE™ Balustrade System is supplied in kit form, ready to fit for an easy installation and offers an attractive, stylish and low maintenance solution.**

During manufacture, the extrusions are tested for colour and gloss consistency, long-term colour retention, superior impact performance and dimensional integrity. The beauty of this uPVC is the 10 year warranty and it is fully uv-stabilised, to ensure that it looks as good as the day it was installed.

- Ready to fit and easy to assemble
- Will not rot or decay
- Very strong and fade resistant
- Requires no treatment, staining or paint
- Complies with building regulations
- 100% recyclable
- Fully reinforced





**The system comes in  
a range of colours and  
wood grain finishes.**

\* Special order



**White**



**Cream\***



**Rosewood\***



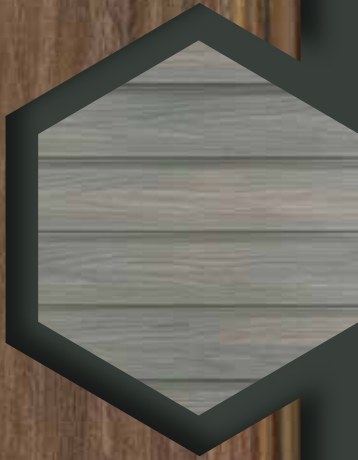
**Golden Oak**



**Forest Green\***



**Anthracite**



# HD CLAD<sup>TM</sup> PRO

***HD Clad Pro<sup>TM</sup> is a wood grain, composite cladding system that offers long lasting, low maintenance, natural facades for handsome exteriors.***

Enhance and transform your home and garden by selecting from a range of natural colours to suit your individual environment. *HD Clad Pro<sup>TM</sup>* exclusively uses FSC® 100% certified hardwood flour and recycled plastic which combine to produce a high quality finish and incredible durability that outperforms traditional timber.

Suitable for commercial and residential properties alike, *HD Clad Pro's* unique properties include:

- **Uncomplicated installation**
- **Requires no treatment, staining or paint**
- **Will not rot or decay**
- **Will not warp, bend or splinter**
- **Mixed use application**



*\* HD Clad Pro<sup>TM</sup> warranty provides 25 years for residential use and 15 years for commercial use*

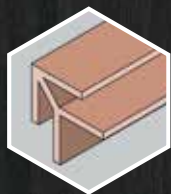
# Wood Grain Composite Cladding System



Image: HD Clad Pro™ Cedar Brown



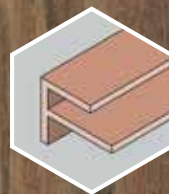




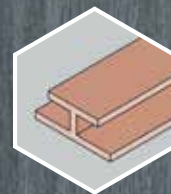
Outside corner  
trim



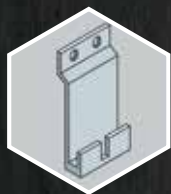
Inside corner  
trim



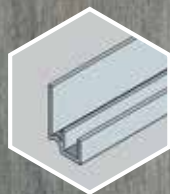
End trim  
F-shaped



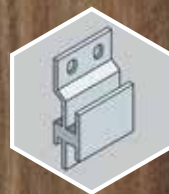
Joining trim  
I-shaped



Starter clip



Starter strip



Fixing clip



Spacer button

**Carbon**

**Cedar Grey**

**Cedar Brown**

**Slate**

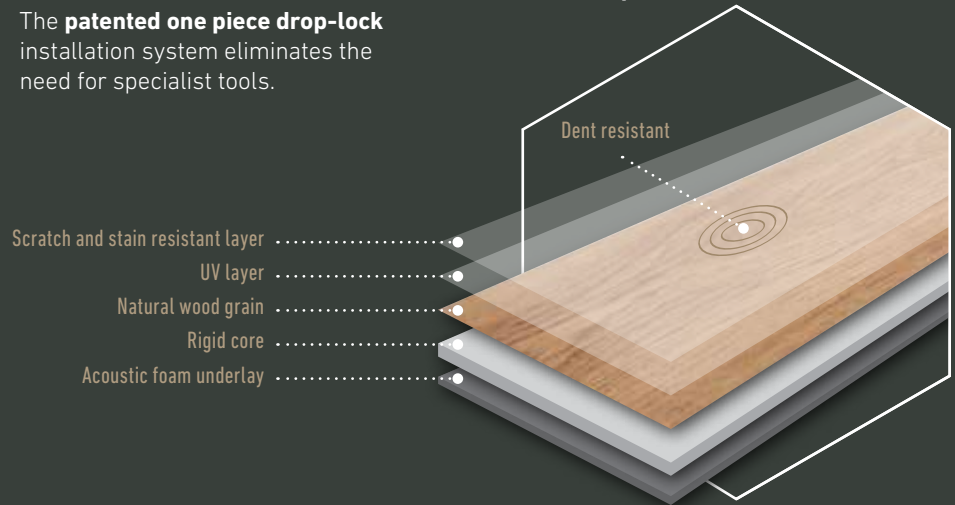


# TOUCHSTONE FLOORING

*Touchstone Flooring™* is a luxury interior flooring system, with a true-grain wood appearance. The **textured 3D surface** gives the look and feel of natural wood but without any of the disadvantages of solid or engineered wood floorings.

The **patented one piece drop-lock** installation system eliminates the need for specialist tools.

- **Quick and smooth installation**
- **Compatible with underfloor heating**
- **Domestic and commercial use** (Class 33)
- **Colour fast** (Grade 6)
- **Matching trims**
- **Waterproof**



A vintage clawfoot bathtub with a dark exterior and white interior is the central focus. It features a chrome faucet and showerhead. A white towel is draped over the left side. The tub sits on a floor with a realistic wood grain pattern. In the foreground, there is a white ceramic pitcher and a small dish with two yellow soaps. The wall behind the tub is covered in white subway tiles, and the upper portion of the wall is a solid light yellow color.

## Authentic Wood Grain Waterproof Flooring System

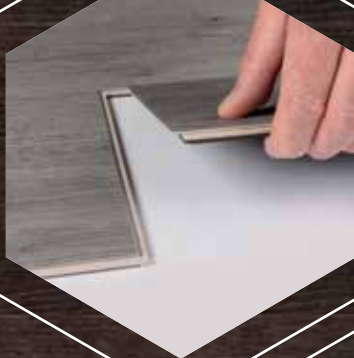
Image: *Touchstone Flooring™* Holborn



## Patented Drop-Lock Installation

Slide into position

1



Drop into place

2



3

Click together





## Zone 1 Wood Grain Finishes



## Zone 2 Stone Finishes



COMING SOON

**HD DECK<sup>®</sup>** 

-  Luxury extra wide 200mm boards
-  Premium Champagne and Oyster colour options

Composite Prime® has been featured in...

adf



building  
construction  
design



Daily Mail

Design Buy Build

The independent European-wide programme  
eppm

GCR  
Garden Centre Retail.com

HOUSEBUILDER  
& DEVELOPER



The Sunday Telegraph

living

MODERN  
Gardens

ParkHome

HOUSE  
& GARDEN

Professional  
Builder

ProLandscaper



THE SUNDAY TIMES





[www.composite-prime.com](http://www.composite-prime.com)

