



FALL PROTECTION

USER INSTRUCTIONS

EN 353-2

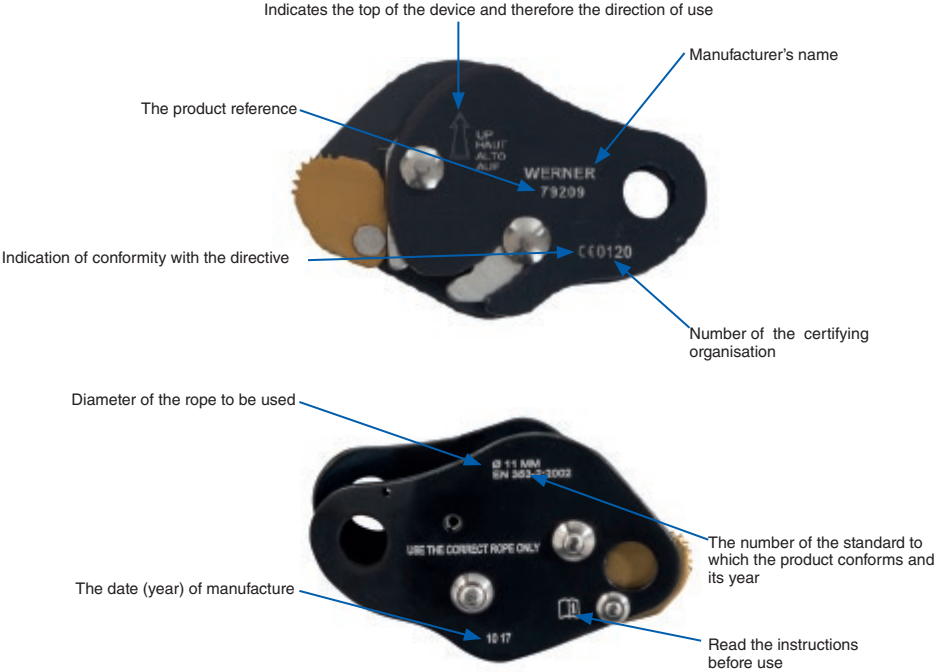
FALL ARRESTER ON FLEXIBLE ROPE LIFELINE



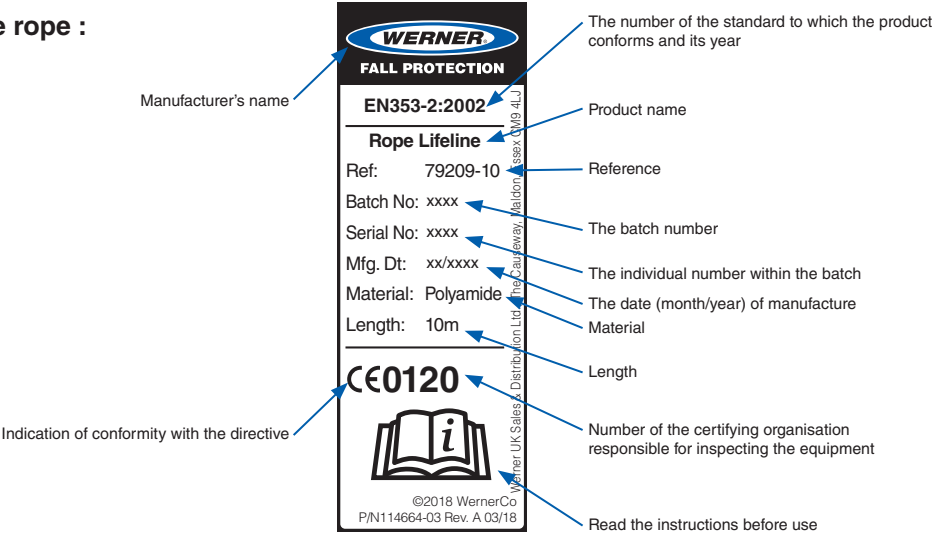
*Images for illustrative purposes only.
Actual product may differ.

Model: 79209
Compatible with Kit(s): 79203,

LABELLING



On the rope :



This notice must be translated (possibly by the retailer) into the language of the country of use.

For your safety, strictly comply with the instructions for use, verification, maintenance and storage. Werner UK Sales & Distribution Ltd. cannot be held liable for any direct or indirect accident occurring following use other than that provided for in these instructions; do not use this equipment beyond its limits!

The '**FALL ARRESTER ON FLEXIBLE ROPE LIFELINE**' is supplied fully assembled and should only be dismantled if a component becomes damaged in any way. The inspection and replacement of any of the components must only be carried out by a competent person authorized to do so by Werner UK Sales and Distribution Ltd. The component parts of this equipment are: 11mm Kermantle rope, rope grab and shock absorbing fall arrest lanyard. Never use any of the component parts individually and never assemble the equipment in any other configuration other than how it was originally supplied when new.

Product markings should be checked periodically for legibility.

Product inspections must only be carried out by competent persons and those authorized by Werner UK Sales and Distribution Ltd.

INSTRUCTIONS FOR USE AND PRECAUTIONS – ROPE LIFE LINE:

The rope life line, when fitted to an item such as a rope grab, is a piece of personal protection equipment and must be allocated to a single user (it can only be used by one person at a time).

The rope life line is manufactured from Kermantle Polyamide material and is 11mm in diameter.

If you are competent to do so, periodically, inspect the condition of the rope for any cuts, nicks, fraying or other damage/wear and tear and replace when necessary. If you are in any doubt, the equipment must be inspected by a competent person who has been authorized by Werner UK Sales and Distribution Ltd.

Ensure that the rope fixing eyelet is in good condition, is undamaged and that the rope remains as a tight fit with the plastic covering present and undamaged.

Ensure that the figure of eight knot at the end of the rope is tight and intact and that the plastic covering is present and undamaged.

The rope is supplied fitted to the rope grab and should never be dismantled except when a replacement is required. When replacing the rope, follow the instructions below to position it correctly within the rope grab unit.

The rope should never be connected directly to the shock absorbing fall arrest lanyard or a harness/belt.

The anchorage point for the rope life line should be located above the user (R>12kN - EN795:2012 or >10kN - EN795:1996).

The clearance must be at least: 3m beneath the feet of the user.

INSTRUCTIONS FOR USE AND PRECAUTIONS – SLIDING ROPE GRAB:

The rope grab is simple to use, small, light, and robust and does not require any particular maintenance. User safety relies on the effectiveness of the equipment and full understanding of the safety instructions contained in this leaflet.

The sliding rope grab, when fitted to an item such as a rope line and shock absorbing fall arrest lanyard, is a piece of personal protection equipment and must be allocated to a single user (it can only be used by one person at a time).

When the user is moving up/down, the rope grab freely slides along the rope line. In the event of a fall, the device stops the fall instantly by locking onto the rope line. After a fall, never try to hold on to the arrester as you may unlock it and fall again!

The rope grab is supplied fitted to the rope line and should never be tampered with or dismantled. If the rope needs to be replaced, due to damage, remove the connector and swivel the two black rope grab plates apart. Position the replacement rope, of the correct diameter (11mm), between the two cams and swivel the black plates together to their original position.

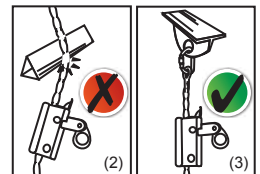
Ensure that the rope is orientated correctly by noting the direction of travel/UP arrow on the swivel plate.

Secure the two black plates by replacing the connector ensuring it is fully locked and tightened.

The rope grab is supplied fitted to the rope and shock absorbing fall arrest lanyard.

The rope grab should never be connected directly to a harness.

The rope grab must always be used directly below the anchor point (3).



INSTRUCTIONS FOR USE AND PRECAUTIONS – SHOCK ABSORBING FALL ARREST LANYARD:

The shock absorbing fall arrest harness, when fitted to an item such as the rope grab, is a piece of personal protection equipment and must be allocated to a single user (it can only be used by one person at a time).

Ensure that the shock absorbing fall arrest lanyard is undamaged, has not been deployed and is fully intact – the plastic sleeve should be present and undamaged and the webbing strap in the folded position.

The shock absorbing fall arrest lanyard is supplied fitted to the rope grab and should never be tampered with or dismantled. If the shock absorbing fall arrest lanyard needs to be replaced, due to damage or deployment, remove the connector that attaches it to the rope grab and replace the complete unit. Never attempt to repair or re-fold the webbing strap or replace the plastic covering.

The shock absorbing fall arrest harness is connected to the rope grab.

The shock absorbing fall arrest lanyard should never be connected directly to the rope life line.

The shock absorbing fall arrest lanyard is connected to the front anchor points of a 2-point harness (2 x A/2). Never connect the shock absorbing fall arrest harness to the rear connector of a harness.

IT IS IMPERATIVE THAT THE ABOVE COMPONENTS ARE NOT REPLACED BY NON-CERTIFIED EQUIPMENT. IF YOU ARE IN ANY DOUBT, CONTACT YOUR RETAILER OR THE MANUFACTURER.

LENGTH ADJUSTMENT:

To move up and down the rope life line, gently pull the rope through the rope grab in the appropriate direction. Always ensure that the appropriate rope grab lock is activated at all times.

Never allow an excessive amount of 'loose' rope to be above the rope grab which could allow a fall of more than 0.6m.

Check the adjuster/rope grab position regularly during use.

Reference	Rope Grab			Anchor line		Use for inclined plane
	Rope Grab Material	Connector material	Fixed point lock	Material/ Type	Diam.	
79209 & 79209-10	Aluminium	Steel	YES	Kernmantle Polyamide	11 mm	YES

GENERAL REQUIREMENTS:

This kind of device must be assigned to a single user (it can only be used by one person at a time).

Sharp edges, small diameter structures and corrosion should be avoided as they may affect the performance of the system (2); or they should be adequately protected.

Ensure that the general set-up limits swinging in the event of a fall, and that the work is performed to limit the risk and the height of a fall.

For safety reasons and before each use, make sure that in the event of a fall there is no obstacle obstructing the normal functioning of the system.

Before and during use, we recommend that you take all the necessary precautions for a safe rescue should it be needed.

This equipment is for the sole use of people trained, skilled and in good health, or under the supervision of a trained and skilled person.

Warning! certain medical conditions may affect user safety; if in doubt, consult your doctor before using this equipment.

Be aware of the hazards that could reduce the performance of this equipment, and therefore the user's safety, if exposed to extreme temperatures (< -30°C or > 50°C), prolonged exposure to the elements (UV rays, humidity), chemical agents, electrical constraints, twisting of the fall arrest system during use, sharp edges, friction or cutting, etc.

Chemical products: do not use the device in the event of contact with chemical products, solvents or fuels which could affect its operation.

Before each use, check that the rope lifeline is in good condition (visual inspection). If there is any doubt as to the condition of the rope life line such as cuts, nicks, fraying or the eyelet is loose/missing/damaged or the knot is missing/loose or the rope line has been involved in a fall, it must not be reused and/or must be returned to the manufacturer or a competent person appointed by the manufacturer.

Before each use, check that the rope grab locking system is in working order (manual test). If there is any doubt as to the condition of the rope grab device (traces of oxidation) or after a fall (deformation), it must not be reused and/or must be returned to the manufacturer or a competent person appointed by the manufacturer.

Before each use, check that the shock absorbing fall arrest lanyard is in good condition (visual inspection). If there is any doubt as to the condition of the shock absorbing fall arrest lanyard (cuts, nicks, fraying) or after a fall (the lanyard is deployed), it must not be reused and/or must be returned to the manufacturer or a competent person appointed by the manufacturer.

SUITABILITY FOR USE:

The equipment should be used with a fall arrest system as specified in the data sheet (see standard EN363) to guarantee that the dynamic force exerted on the user during the arrest of a fall is maximum 6 kN.

A fall arrest harness (EN361) is the only body support device that may be used. It may be dangerous to create one's own fall arrest system where each safety function can interfere with another safety function.

Therefore, it is important to read the recommendations on using each component in the system before use.

VERIFICATION:

As a guide only, the expected service life of this equipment is 10 years (dependent on the product inspections, carried out by a competent person authorized by Werner UK Sales & Distribution Ltd and as required by the relevant legislation within the country of use). Dependent on the actual use of this equipment, the expected service life may be increased or decreased.

The product must be thoroughly inspected in case of doubt or after a fall as required by local and national legislation, company policy or site requirements and by a competent person.

The product data sheet should be completed (by writing) after each inspection noting the date of the inspection, the name of the inspector, the nature of any issues identified, the recommendation for continued use and the date of the next scheduled inspection.

MAINTENANCE AND STORAGE:

During transportation, keep the equipment away from any sharp edges and in its original packaging.

Clean with water and wipe dry with a soft cloth.

If the product has become wet during use, or after cleaning, hang in a well ventilated room to dry naturally.

Ensure the product is kept away from any direct light, and sources of extreme heat and cold

REPAIRS ON ANY COMPONENT OF THIS EQUIPMENT ARE NOT PERMITTED. DAMAGED COMPONENTS MUST BE REPLACED WITH CERTIFIED PRODUCT RECOMMENDED BY WERNER UK SALES AND DISTRIBUTION LTD. NEVER USE NON-CERTIFIED REPLACEMENT COMPONENTS

EQUIPMENT IDENTIFICATION SHEET	
User's name	
Reference	
Batch (or serial) n°	
Date of manufacture	
Date of purchase	
Date of 1st use	
Manufacturer	Werner UK Sales & Distribution Ltd.
Address	The Causeway, Maldon, Essex, CM9 4LJ
Tel, fax, e-mail and website	+44 (0) 1621 745 900, uk.customer@wernerco.com, wernerfallprotection.co.uk

Tel, fax, e-mail and website

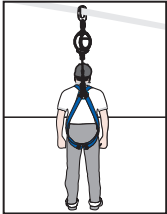
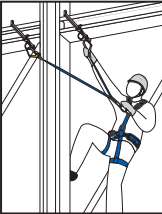
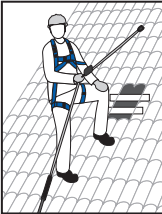
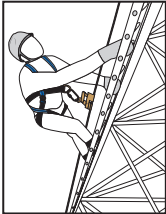
**+44 (0) 1621 745 900, uk.customercare@wernerco.com,
wernerfallprotection.co.uk**

[illegible]

Date of the next expected periodic examination

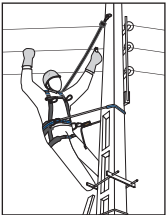
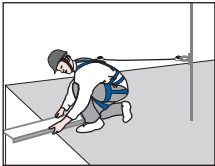
Examples of fall arrest system

EN795			
+			
EN362			
+			
EN353-1	EN353-2	EN355	EN360
+	+	+	+
EN361	EN361	EN361	EN361



Example of work restraint and work positioning system

EN795
+
EN362
+
EN354/EN358
+
EN358



As part of your risk assessment, you must have a rescue plan before working at height to deal with any emergency that may arise.
EN341 // EN567 // EN1496 // EN1498 // EN1865 // EN12272 // EN12841

NOTES

A series of horizontal dotted lines for writing notes.

Notified body having performed the EC type inspection.

**SATRA Technology Centre, N°0321
Wyndham Way, Telford Way, Kettering,
Northamptonshire, NN16 8SD, United Kingdom.**

Notified body inspecting production.

**SGS United Kingdom Ltd., N° 0120
Unit 202B, Worle Parkway,
Weston-super-Mare, BS22 6WA, United Kingdom**

Any use other than these described in this leaflet are to be excluded.



FALL PROTECTION

Werner UK Sales & Distribution Ltd. Ltd.
The Causeway
Maldon
CM9 4LJ

☎ 01621 745 900
✉ uk.customercare@wernerco.com
🌐 wernerfallprotection.co.uk